



Energy Panel Structures, Inc.

603 N. Van Gordon Ave., Graettinger, IA 51342

712-859-3219

232 Semo Lane, Perryville, MO 63775

573-547-8187

Iowa Production Facility



*02 Bone White



*04 Brite White



06 Rural Red



08 Forest Green



10 Mocha Tan



12 Brown



14 Light Stone



16 Taupe



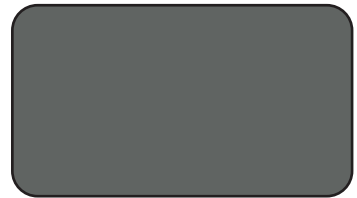
18 Brite Red



20 Ash Gray



22 Zinc Gray



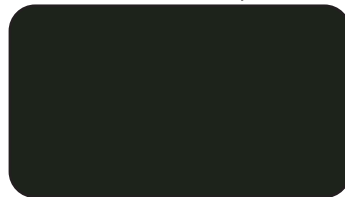
24 Charcoal



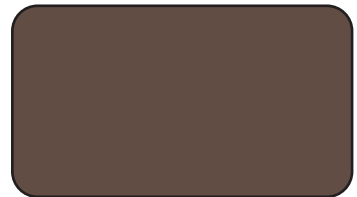
30 Ocean Blue



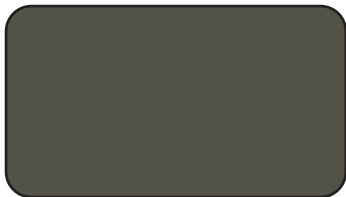
32 Dark Blue



34 Black



38 Burgundy



40 Dark Bronze



44 Light Gray



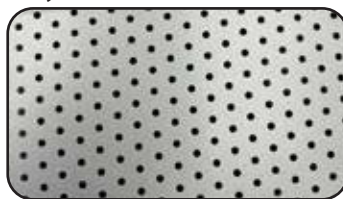
42 Vibrant Red



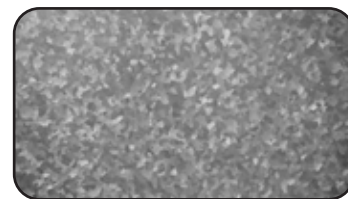
46 Hunter Green



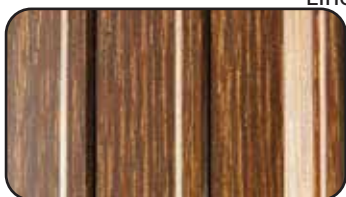
G60 30GA Brite White
Liner Panel



G60 30GA Brite White
**Acoustic Panel



00 G90 Galvanized



84 Matte Barnwood Cedar Red

The above colors are intended as an approximation of actual color supplied.

Check plant for availability of colors and substrates.

*Available in 29 GA G100, 29 GA G60 and 26 GA G90.

**Perforations are .094" dia. and 3/8" centerline to centerline.



83 Matte Barnwood Gray

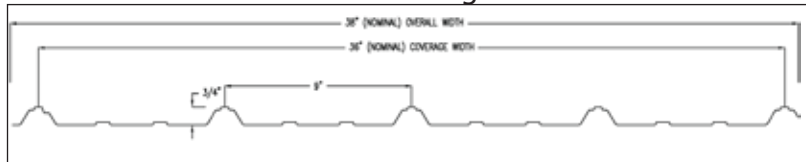
EPS 29 ga. Steel Layer System

EPS roll forms our own steel. We utilize computer controlled instruments to achieve exact matches of measurements, color and uniformity. EPS paint coating carries a 40 year warranty for check, fade, or peel.

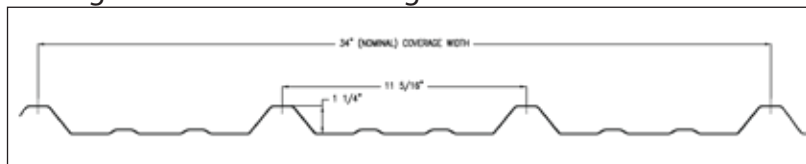
1. ASTM A653, Grade 80, G-100 Available in all colors. Check plant for availability.
2. Zinc coating guards against corrosion.
3. Pretreatment provides superior adhesion of the primer.
4. Urethane primer provides additional corrosion protection as well as ensuring permanent bonding of the finish coat.
5. Siliconized polyester (SMP) finish coat adds fade-resistant color and long-lasting protection.

High rib steel is an option for buildings that have lower pitched roof systems. The ribs are 1-1/4" tall. The ribs are 11.33" OC and the steel has 34" wide coverage. Includes #10 x 1-1/2" screw with 5/8" wide oversized washer.

EPS Standard Rib Steel Panel Configuration

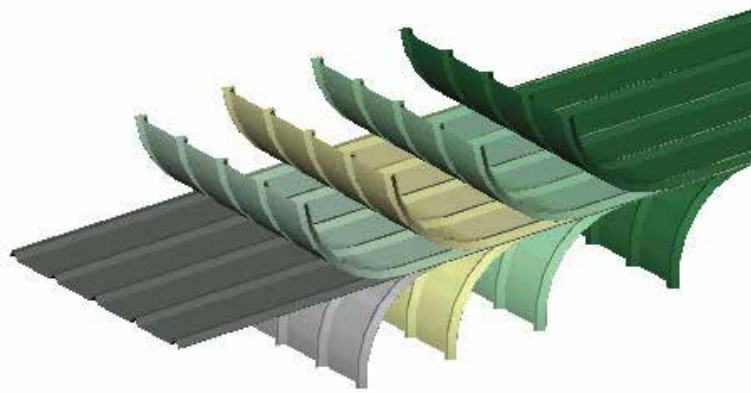


EPS High Rib Steel Panel Configuration



Trim roll formers

Two 3-line trim roll form machines with mandrel 10,000 lb. uncoiler, coil car, and cut to length slitter. EPS also uses three different break presses and standard trims are all hemmed for added strength and aesthetics.



The paint systems utilized by Energy Panel Structures, Inc. are based on unique polyester and silicon polyester resins that are extremely flexible. All paint systems employed are designed for longer lasting color and the reduction of white rust corrosion. The paint systems are used in architectural, commercial, and agricultural building panels. SMP paint systems will provide excellent abrasion resistance and durability.

All of the colors have been rigorously tested for performance using the highest standards as set by the National Coil Coaters Association as well as ASTM standards. The tests illustrate that the paint systems utilized are superior to the control standards for film integrity, chalk and fade. We offer a complete coating system, with primers and backers designed to provide optimum field performance in terms of adhesion, fabrication capability, resistance to abrasion and long-term corrosion resistance under normal conditions.



EPS uses all color-matched screw fasteners on our walls and roofs which also carry a limited lifetime warranty.